



DRUMHELLER

RESILIENCY AND FLOOD MITIGATION OFFICE



**DRUMHELLER
VALLEY**

MEDIA ADVISORY

September 16, 2020
For immediate release

Dike Condition Inspections

Starting on September 17th, engineering consultants and field crews will begin clearing and mowing vegetation on the top and sides of dikes along the valley. The crews will be inspecting 6.5 km of provincial dikes in various locations.

A condition inspection of provincial dikes is being conducted to determine if maintenance and repairs are required. This also allows us the opportunity to evaluate the condition and assists in determining what our new design will include.

Brushing (removal/ brushing/trimming of vegetation) is planned for the top of the dikes and downslope face of the dike towards the river. Brushing using a bobcat with a brush cutter attachment will be used and branches cut during brushing works will be hauled off-site.

Work is scheduled for the following areas:

- Dike B (River Grove Campground and Cabins
- Dike C (Drumheller North by Travelodge Hotel)
- Dike D (Badlands Community Facility to Riverside Drive East)
- Newcastle Dike
- Midland Dike
- East Coulee Dike

This work is expected to be completed by the end of October.

Background

To protect Drumheller from rising floodwaters, there are a number of dikes located throughout Town. These dikes have been constructed at different times to protect neighbourhoods from flooding due to ice jams and rising water levels. Dikes constructed throughout the valley take a number of different shapes and forms, from a concrete wall in Midland to earthen dikes in Downtown, to jersey barriers in East Coulee. There is currently over 30 km of diking or infrastructure acting as a dike in the valley, and this inspection program is examining approximately 6.5 km of dikes.

Did you know that flood infrastructure in town is owned by different levels of government? Different dike infrastructure in the Town of Drumheller is owned by the Town and the Provincial Government. This inspection program is looking at provincially owned dikes to assess the health



Infrastructure
Canada

Canada



DRUMHELLER

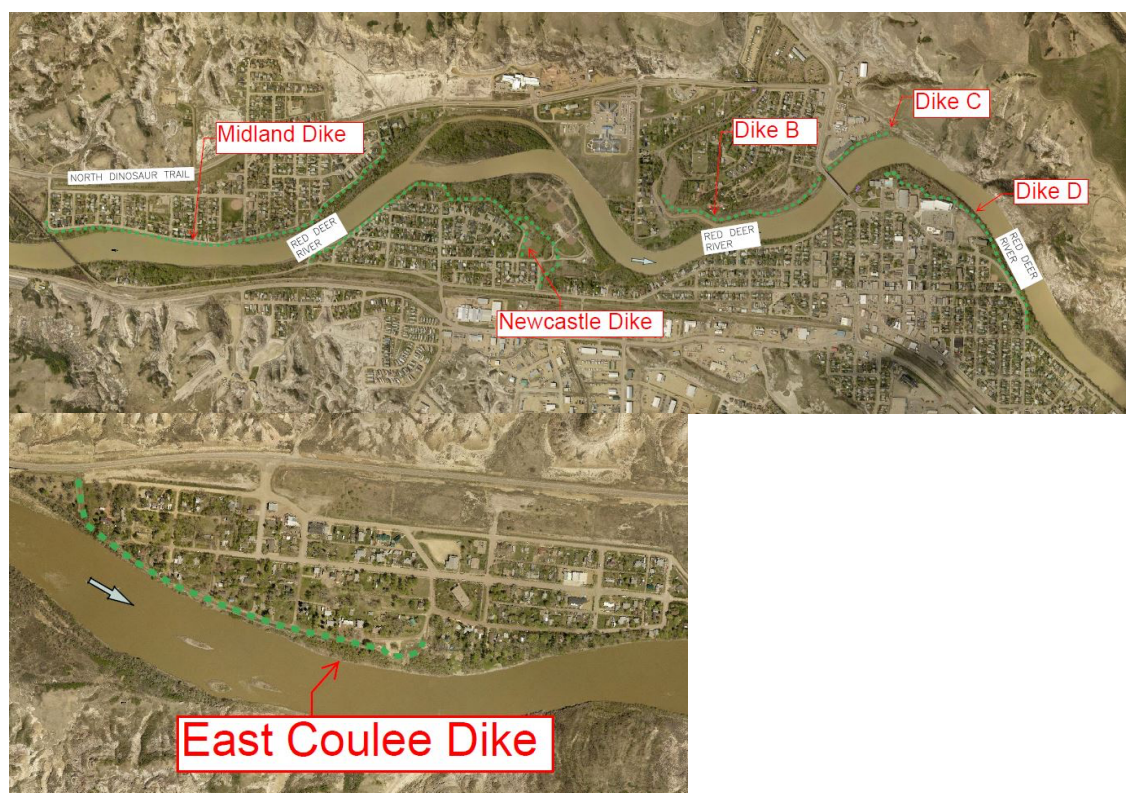
RESILIENCY AND FLOOD MITIGATION OFFICE



DRUMHELLER
VALLEY

and condition that they're in. The Drumheller Resiliency and Flood Mitigation Office will be working with local contractors and engineering consultants to plan and execute inspection work over the coming weeks. You can expect to see individuals clearing brush from dikes in the communities of North Drumheller, Downtown Drumheller, Midland, Newcastle and East Coulee over the next couple of weeks under the careful supervision of the Drumheller Resiliency and Flood Mitigation Office.

Crews are planning to be working weekdays 8AM-6PM, to minimize disturbance and disruption.



For more information please contact:

SweetTech Engineering

Thomas Schaepsmeyer

587-329-6655 ext. 9