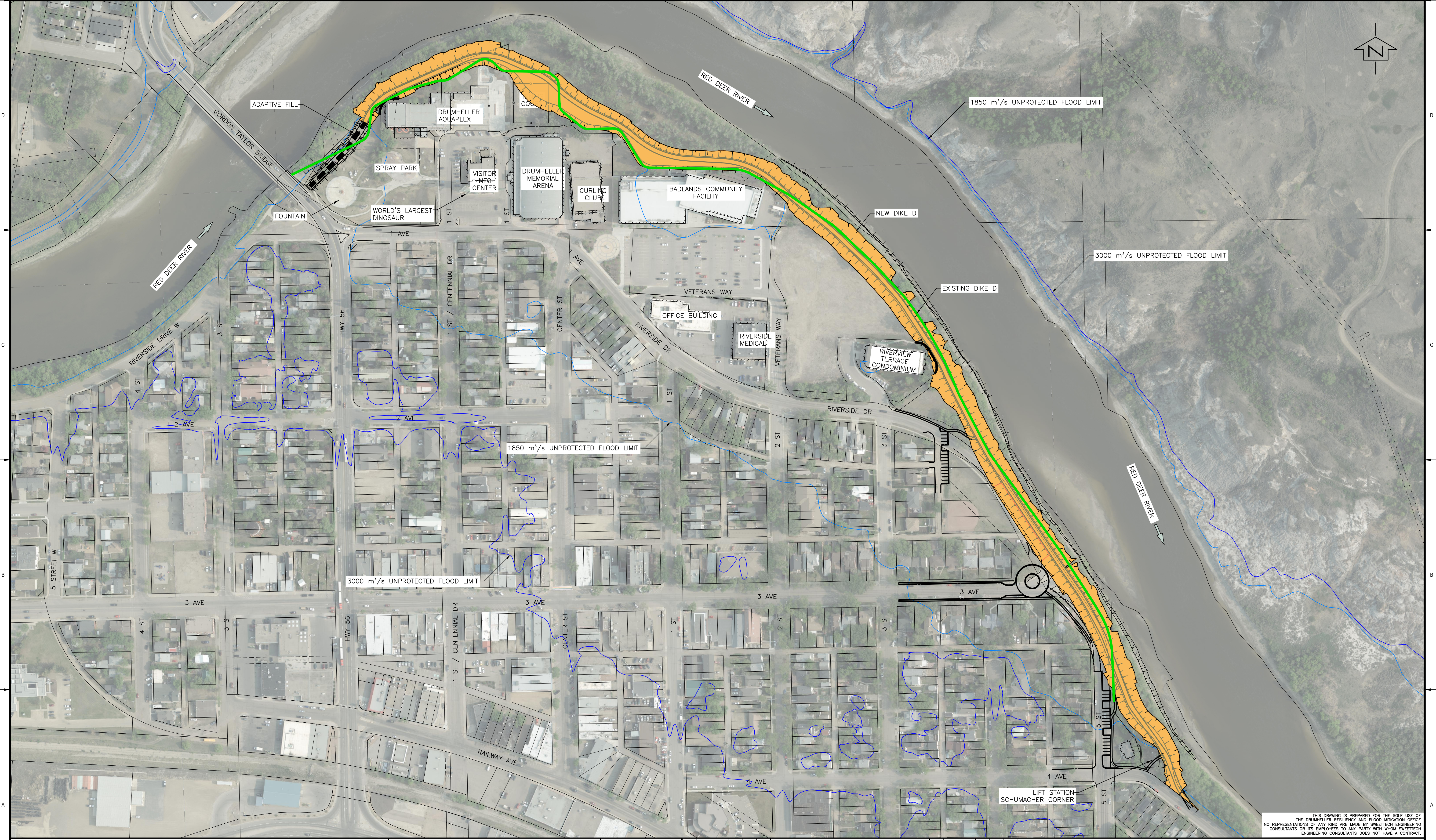


M:\Projects\21.2311.002\CADD\Drawing Set\_COMMS\21.12.09 OPEN HOUSE\SITE-212311002-overall fig.dwg, G-002, 2021/12/03 03:08 pm Theresa  
 Page Size - ANSI D  
 At Full Size, this border measures 520 mm x 800 mm  
 Saved: 2021/12/03, 12:59 PM



PERMIT NUMBER: P13638

| Rev | Date       | Des | Dwn | Chk | Description           | Rev | Date | Des | Dwn | Chk | Description |
|-----|------------|-----|-----|-----|-----------------------|-----|------|-----|-----|-----|-------------|
| A   | 2021-12-09 | T2  | GM  |     | ISSUED FOR OPEN HOUSE |     |      |     |     |     |             |

**DRUMHELLER RESILIENCY & FLOOD MITIGATION OFFICE**  
**DRUMHELLER - DIKE D**  
**OVERALL SITE PLAN**

Project No. **21.2311.002** Drawing No. **G-003** Rev. **A**  
 Group **GENERAL**

THIS DRAWING IS PREPARED FOR THE SOLE USE OF THE DRUMHELLER RESILIENCY AND FLOOD MITIGATION OFFICE. NO REPRESENTATIONS OF ANY KIND ARE MADE BY SWEETECH ENGINEERING CONSULTANTS OR ITS EMPLOYEES TO ANY PARTY WITH WHOM SWEETECH ENGINEERING CONSULTANTS DOES NOT HAVE A CONTRACT.