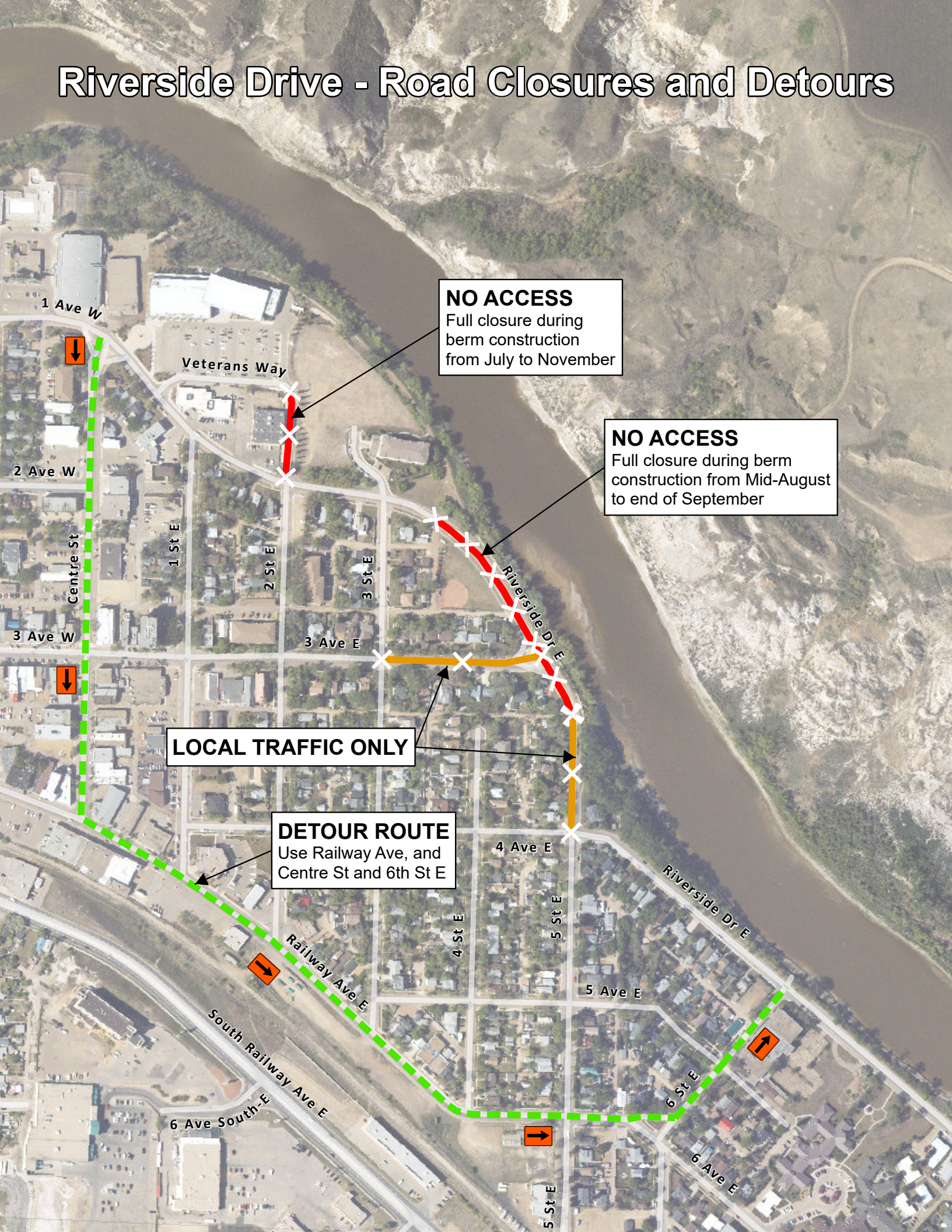


# Riverside Drive - Road Closures and Detours



**NO ACCESS**  
Full closure during berm construction from July to November

**NO ACCESS**  
Full closure during berm construction from Mid-August to end of September

**LOCAL TRAFFIC ONLY**

**DETOUR ROUTE**  
Use Railway Ave, and Centre St and 6th St E

