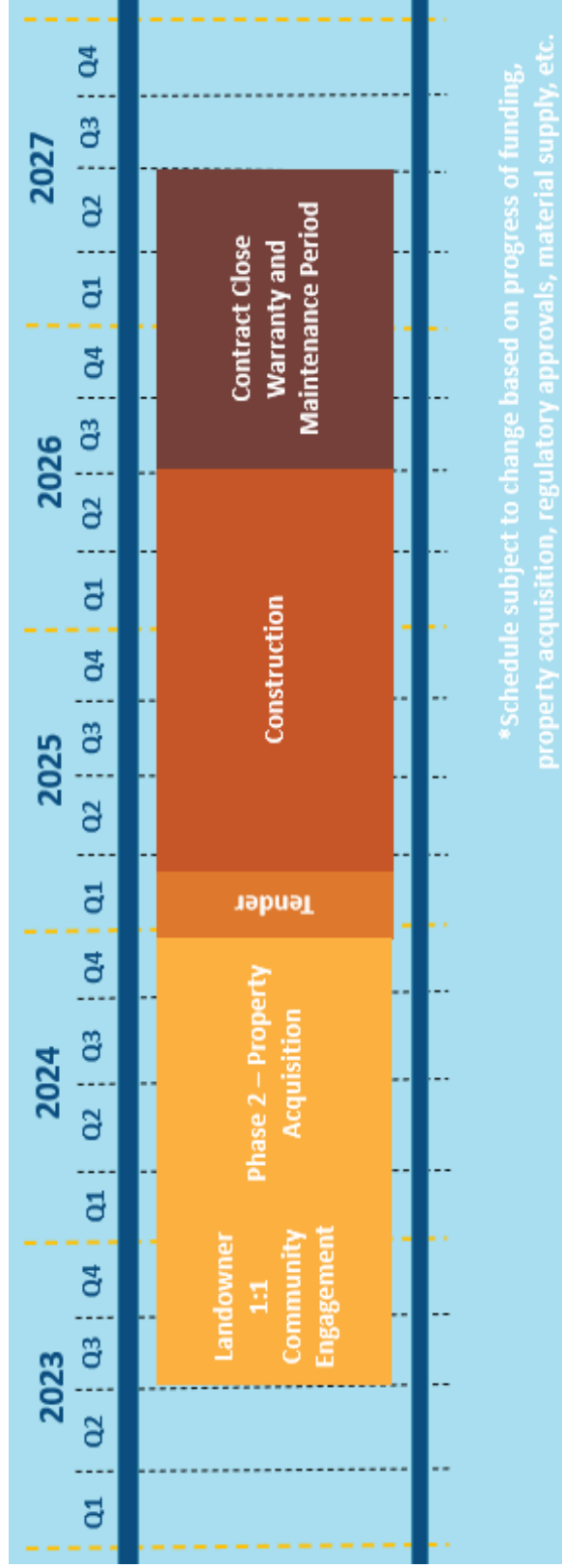


Nacmine Berm – Preliminary Schedule



For more information visit our website at <https://floodreadiness.drumheller.ca> or email us at floodreadiness@drumheller.ca



Drumheller Flood Info



@DRMFloodInfo



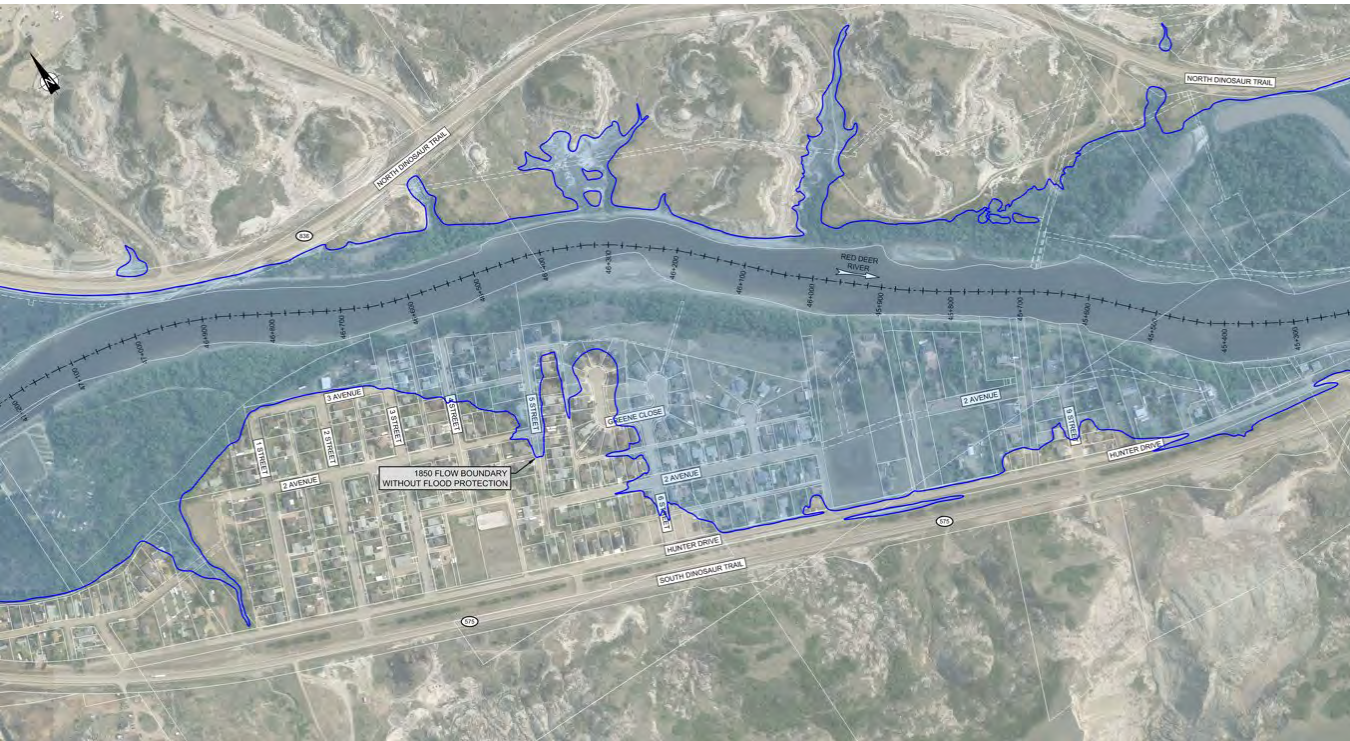
@DRMFloodInfo

2023-09-14

Nacmine Community Information Package

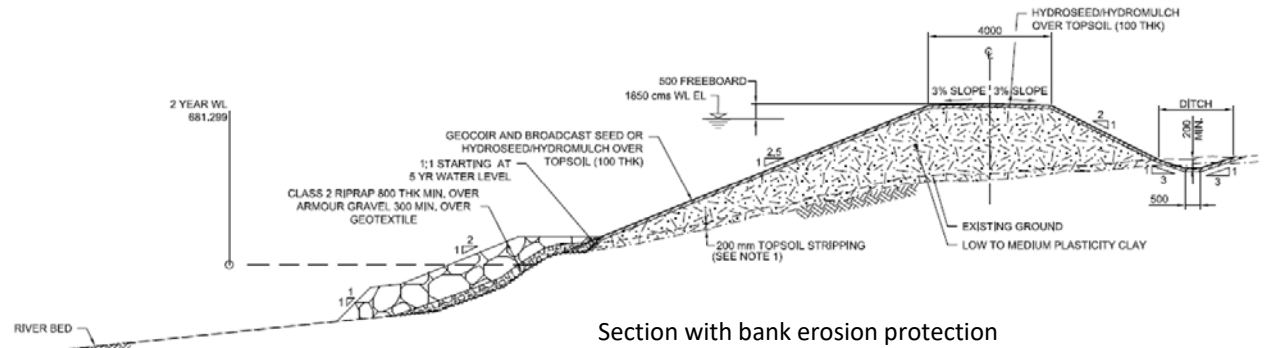


Nacmine Flood Risk

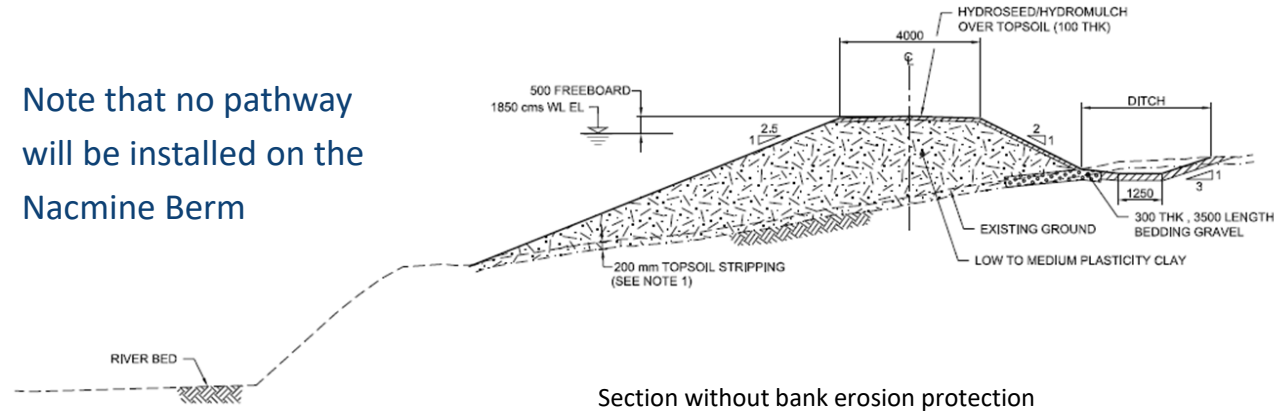


- Based on the updated provincial mapping, the flooding extents for the design flow rate of 1850m³/s, which is the regulated 1:100 year flood on the Red Deer River, are shown on this figure.
- The Nacmine berm will mitigate against this flooding, protecting the community into the future.
- Berm elevation is set for design flood elevation + 0.5m freeboard.
- Berm top width will be 4m.
- Once the berm is constructed 98 homes will be protected.

Nacmine Berm Cross Section

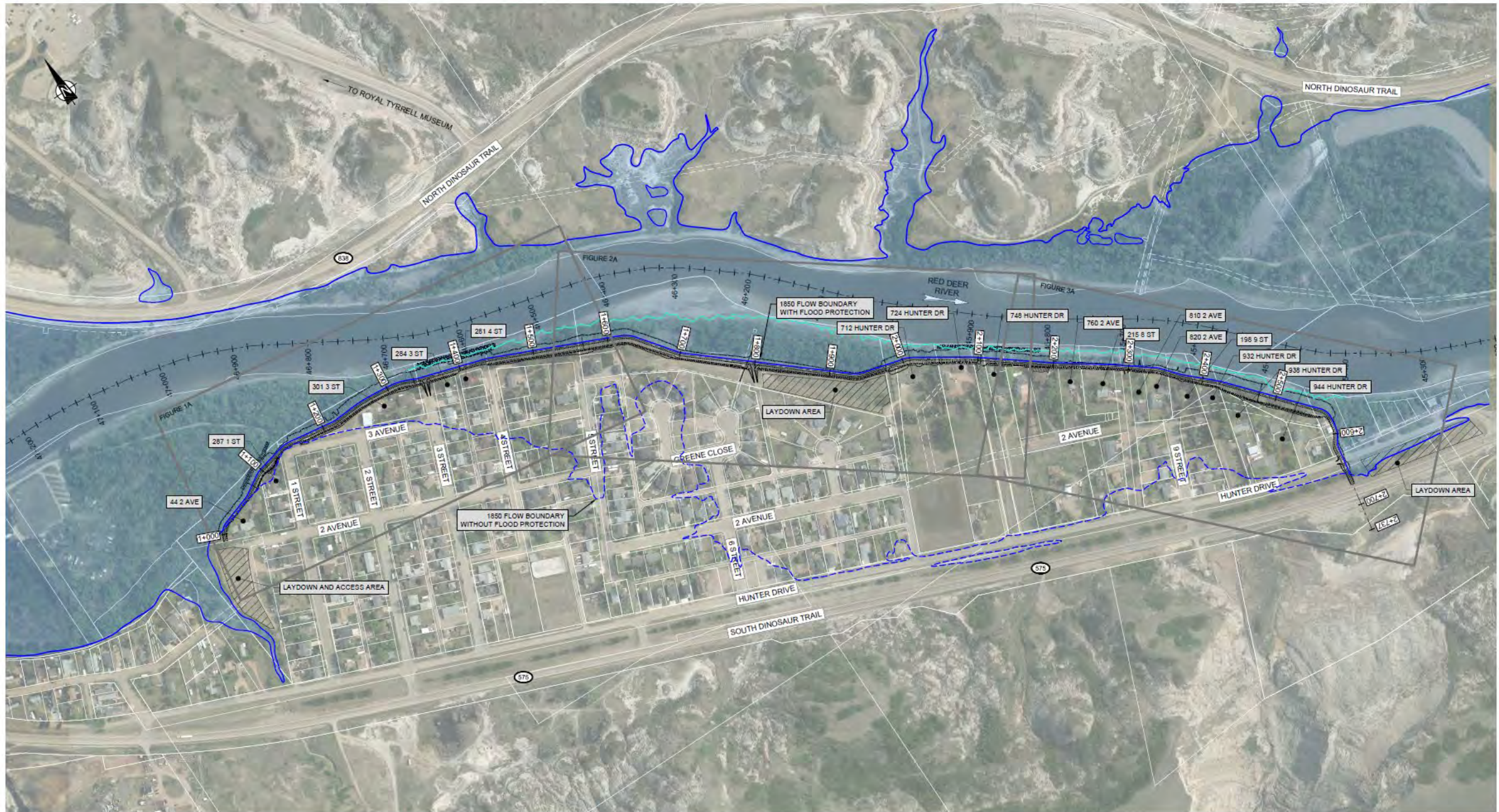


Note that no pathway will be installed on the Nacmine Berm



Long-Term Berm Design Intent



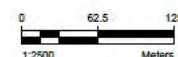


NOTES:

1. EXISTING GROUND CONTOURS INFORMATION WAS DERIVED FROM LIDAR (2018) AND PROVIDED BY DRFMO.
2. HIGH RESOLUTION AERIAL PHOTO FROM 2019 AND PROVIDED BY DRFMO.

LEGEND:

- FLOW BOUNDARY 1850 cms
- 2 YEAR WATER LEVEL



DRAFT

NOT FOR CONSTRUCTION

Project Number:

CW238404

Date:

SEPTEMBER 14, 2023



DRUMHELLER RESILIENCY AND FLOOD MITIGATION
COMMUNITY ENGAGEMENT

Figure 1



Beware of Construction Zones



URGENT MESSAGE FROM THE FLOOD OFFICE!

We want to remind everyone of the risks associated with entering construction work sites.

Construction sites are hazardous areas, and unauthorized entry can result in serious injury or harm to oneself and others.

The Town of Drumheller and its contractors prioritize safety and have implemented strict safety protocols to ensure the well-being of workers and visitors on the site. These safety measures include the use of safety gear, installation of barricades, and prominent warning signs.

We ask all residents to respect and adhere to these safety protocols. Unauthorized entry into the construction site without proper authorization is strictly prohibited. By doing so, you not only put yourself at risk but also jeopardize the safety of others.

If you have any questions or concerns regarding the Flood Mitigation Project or the safety protocols in place, please feel free to contact us at floodreadiness@drumheller.ca.

Your safety is our utmost priority, and we appreciate your cooperation in ensuring a secure work environment for everyone.



Tree Replacement Strategy

To preserve the Drumheller Valley urban tree canopy, healthy trees removed for berm construction will be replaced according to the following guidelines:

ENHANCE THE URBAN FOREST

5 new trees or shrubs will be planted for each healthy tree removed



DESIGN FOR BIODIVERSITY

plant a range of species to promote long-term success and resiliency



ENHANCE EXISTING PLANT COMMUNITIES

prioritize species that are similar to those that are currently thriving in the local area



ENHANCE THE URBAN FOREST

prioritize revegetation near the berm, where feasible, and in public areas within the local community

