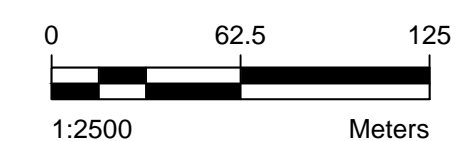


NOTES:

- EXISTING GROUND CONTOURS INFORMATION WAS DERIVED FROM LIDAR (2018) AND PROVIDED BY DRFMO.
- HIGH RESOLUTION AERIAL PHOTO FROM 2019 AND PROVIDED BY DRFMO.

LEGEND:

- FLOW BOUNDARY 1850 cms
- 2 YEAR WATER LEVEL



DRAFT

NOT FOR CONSTRUCTION

Project Number:
CW238404

Date:
SEPTEMBER 14, 2023



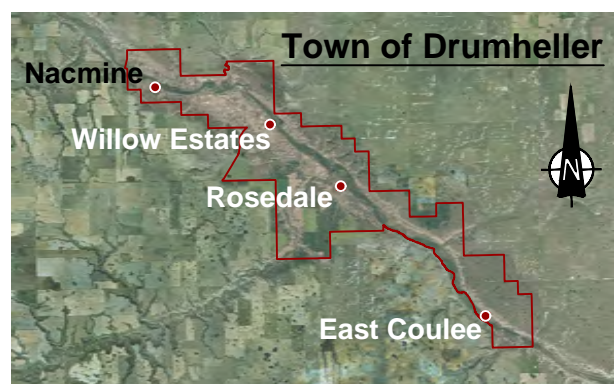
DRUMHELLER RESILIENCY AND FLOOD MITIGATION
COMMUNITY ENGAGEMENT

Figure 1



PLAN - NACMINE BERM CENTERLINE
Scale 1:750

FOR CONTINUATION SEE FIGURE 2A

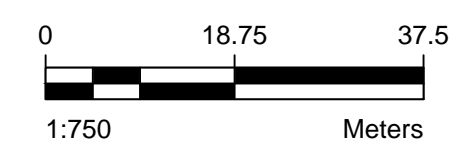


NOTES:

- EXISTING GROUND CONTOURS INFORMATION WAS DERIVED FROM LIDAR (2018) AND PROVIDED BY DRFMO.
- HIGH RESOLUTION AERIAL PHOTO FROM 2019 AND PROVIDED BY DRFMO.

LEGEND:

- FLOW BOUNDARY 1850 cms
- UG STORM NETWORK
- GAS SERVICE LINE
- POWER LINE
- WATER SERVICE LINE
- SEWER NETWORK



DRAFT

NOT FOR CONSTRUCTION

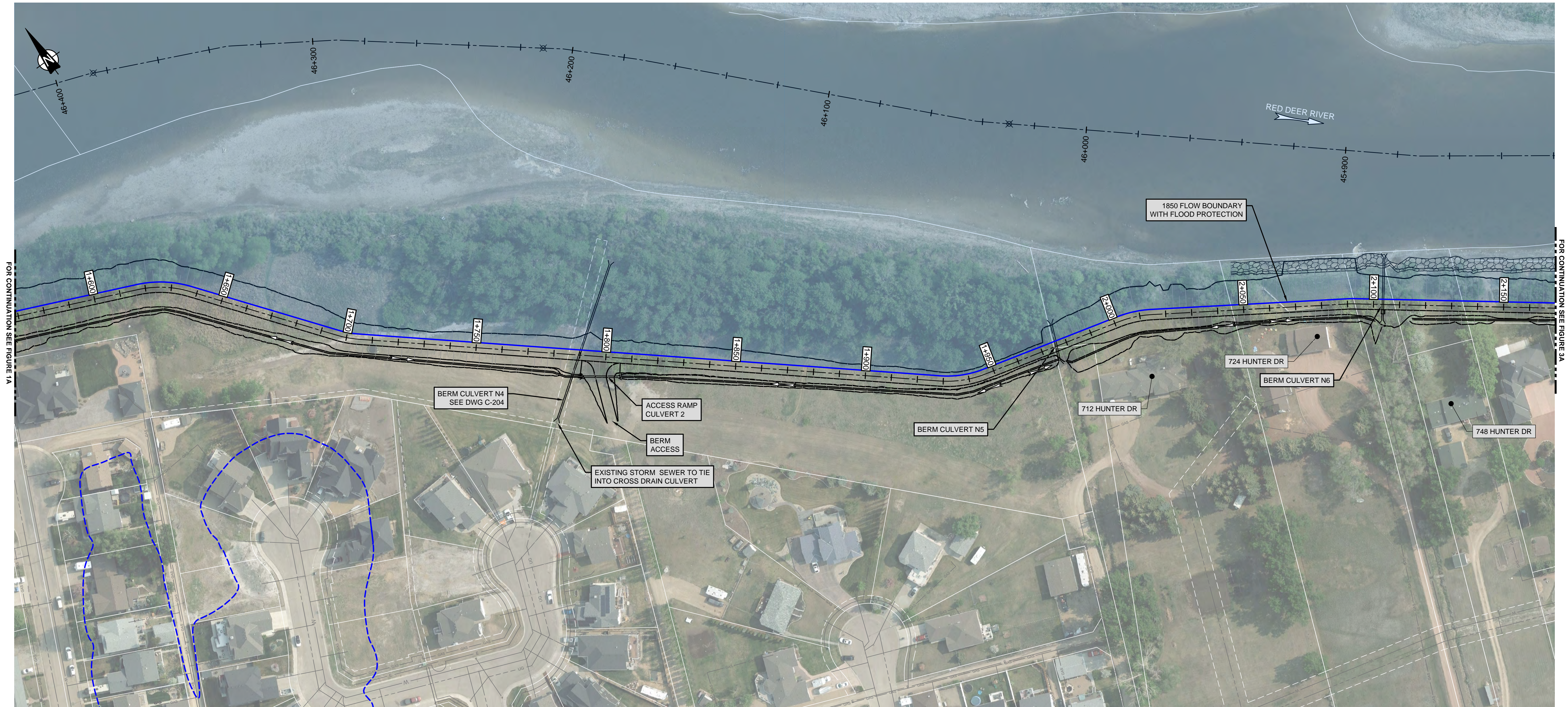
Project Number:
CW238404

Date:
SEPTEMBER 14, 2023

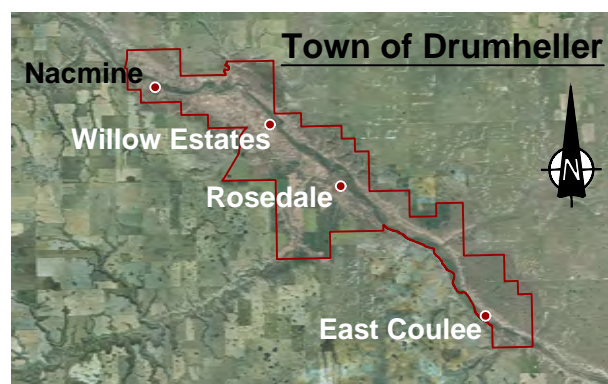


DRUMHELLER RESILIENCY AND FLOOD MITIGATION
COMMUNITY ENGAGEMENT

Figure 1A



PLAN - NACMINE BERM CENTERLINE
Scale 1:750

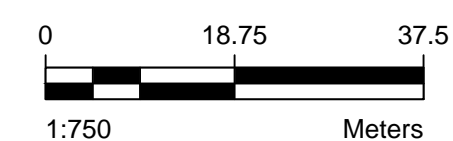


NOTES:

- EXISTING GROUND CONTOURS INFORMATION WAS DERIVED FROM LIDAR (2018) AND PROVIDED BY DRFMO.
- HIGH RESOLUTION AERIAL PHOTO FROM 2019 AND PROVIDED BY DRFMO.

LEGEND:

- FLOW BOUNDARY 1850 cms
- UG STORM NETWORK
- GAS SERVICE LINE
- POWER LINE
- WATER SERVICE LINE
- SEWER NETWORK



DRAFT

NOT FOR CONSTRUCTION

Project Number:
CW238404

Date:
SEPTEMBER 14, 2023

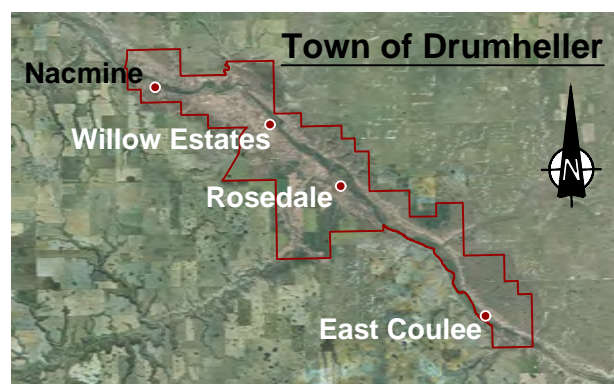


DRUMHELLER RESILIENCY AND FLOOD MITIGATION
COMMUNITY ENGAGEMENT

Figure 2A



PLAN - NACMINE BERM CENTERLINE
Scale 1:750

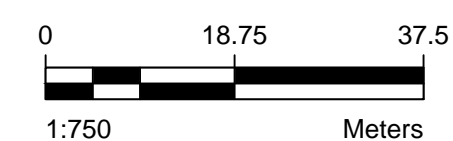


NOTES:

1. EXISTING GROUND CONTOURS INFORMATION WAS DERIVED FROM LIDAR (2018) AND PROVIDED BY DRFMO.
2. HIGH RESOLUTION AERIAL PHOTO FROM 2019 AND PROVIDED BY DRFMO.

LEGEND:

- FLOW BOUNDARY 1850 cms
- UG STORM NETWORK
- GAS SERVICE LINE
- POWER LINE
- WATER SERVICE LINE
- SEWER NETWORK



DRAFT

NOT FOR CONSTRUCTION

Project Number:
CW238404

Date:
SEPTEMBER 14, 2023



DRUMHELLER RESILIENCY AND FLOOD MITIGATION
COMMUNITY ENGAGEMENT

Figure 3A