



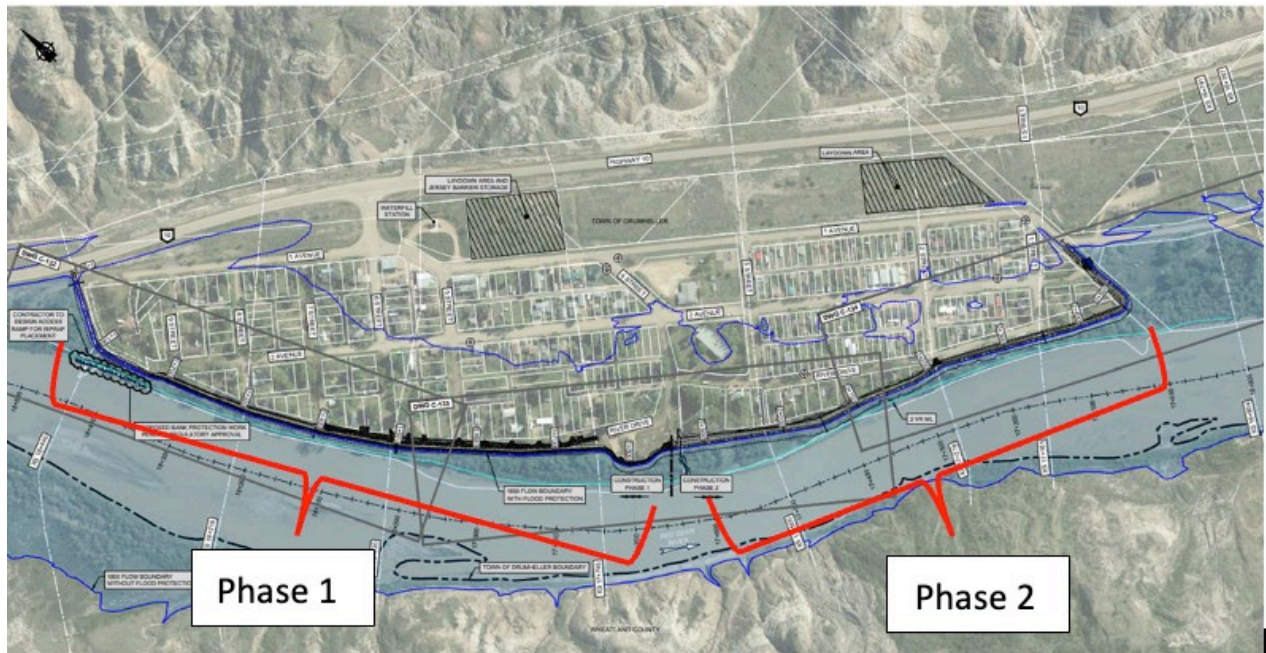
CONSTRUCTION NOTICE

East Coulee Berm Project

We would like to inform you about the upcoming construction project involving the East Coulee Berm, which aims to enhance the safety and resilience of our community against flooding events. We understand that construction projects can be disruptive, but we assure you that we will prioritize minimizing inconvenience to the residents of East Coulee. Here is an overview of the project, including Phase 1 and Phase 2 details, along with important information and contact details for your reference.

Project Overview:

The East Coulee Berm construction project involves the upgrade and expansion of the existing berm along the west side of East Coulee on River Dr. Phase 1 focuses on constructing an approximately 1000 m berm upgrade, while Phase 2 will extend from the wastewater treatment plant and tie in downstream near the intersection of 1st Ave and 1st St.



Phase 1 Work Summary:

Under Phase 1 construction in 2023, the existing berm was widened to 4 m and raised to meet the new 100-year return period flood level. This involved removing the topsoil, vegetation, asphalt pathway, and jersey barriers from the existing berm. New earthfill material was brought in to build up the berm section. The River Drive road surface was also raised, and upgrades made to the stormwater drainage infrastructure, where required. The berm surface will be finished with topsoil and seed and the previous asphalt pathway will be rebuilt as a gravel pathway. Final Phase 1 landscaping work will be completed in spring/summer 2024. To compensate for tree removal, new trees and shrubs have been planted around the community.



CONSTRUCTION NOTICE

Phase 2 Scope of Work:

Phase 2 will continue the construction from the wastewater treatment plant, extending downstream to high ground near the intersection of 1st Ave and 1st St. The riprap rock placement at the upstream end of Phase 1 will be completed during Phase 2 construction, pending regulatory approvals.

Schedule:

Phase 2 is anticipated to take place starting in Spring 2024 and be completed by end of Fall 2024. However, the progress of the work will depend on external factors such as weather conditions and the levels of the Red Deer River. In conjunction with Phase 2, some final cleanup work associated with Phase 1, that was not completed last year, will be completed. This work will include finalizing topsoil placement and seeding of the berm, the installation of the gravel pathway at the top of the berm to replace the previous pathway, and the resurfacing of River Dr to restore it to previous conditions. Any changes to the schedule will be thoroughly communicated to residents and property owners in the impacted areas.

Contractor Information:

The construction contract for the project has been awarded to Brooks Asphalt and Aggregate Ltd., a company with previous experience working for the Town of Drumheller and a successful track record of completing large earthworks projects.

Town's Planned Snow Dump and Contractor's Laydown Area:

Please note that the Town's planned snow dump will not be proceeding. However, Brooks Asphalt and Aggregate Ltd. will be setting up a laydown area for storage along 1 Avenue. This designated area will be used for the contractor's operational needs during the project.

Vibration Monitoring and Groundwater Well Testing:

To ensure the safety and integrity of the surrounding structures and groundwater resources, the construction project will include vibration monitoring and groundwater well testing. Here are some important details:

Vibration Monitoring:

Prior to starting construction, the Town's engineering team has offered residents Pre-Construction Home Inspections, to document pre-existing conditions to the home and help identify if any changes occur during construction. Vibration monitoring measures will be implemented by the Town during construction and activities that involve heavy machinery and earthworks. These measures will help assess and control vibration levels to ensure they remain within acceptable limits and minimize any potential impact on nearby structures. The monitoring will be conducted by qualified professionals who will closely monitor vibration levels throughout the construction process.

Groundwater Well Testing:

To safeguard the groundwater resources in the area, groundwater well testing was carried out ahead of the construction project. The Town will also conduct testing after construction completion to aid in evaluating any impacts noted post-construction. This testing will be performed by experienced professionals in accordance with industry standards and guidelines.



CONSTRUCTION NOTICE

The results of both the vibration monitoring and groundwater well testing will be carefully analyzed and reviewed to ensure compliance with regulatory requirements and to address any potential concerns that may arise. If any issues are identified, appropriate measures will be taken to mitigate the impact.

We want to emphasize that the project team is committed to maintaining the safety and sustainability of the community throughout the construction process. If you have any questions or concerns regarding vibration monitoring or groundwater well testing, please don't hesitate to contact the project contacts provided below.

Potential Impacts and Mitigation Measures:

We understand that construction activities can have potential impacts on the surrounding environment and daily activities. Here are some key points to consider:

1. **Dust:** The contractor will implement dust control strategies to minimize dust generation, such as spraying water and utilizing dust suppression equipment.
2. **Noise:** Efforts will be made to minimize noise levels by adhering to local noise bylaws and utilizing noise reduction methods and equipment. A noise relaxation bylaw waiver will be in place from 7:00am to 7:00pm Monday through Sunday for the duration of the work.
3. **Vibration:** The contractor will monitor and control vibration levels within acceptable limits to minimize any impact on surrounding structures; however, it is likely that you will still feel some vibration.
4. **Truck Traffic:** There will be an increase in truck traffic during the construction period. The contractor will establish designated haul routes and may implement speed reductions in certain areas to ensure the safe movement of trucks.
5. **Haul Routes:** The contractor will determine and communicate specific haul routes to minimize disruptions to local traffic and ensure the safety of residents and road users.

We want to assure you that the contractor, Brooks Asphalt and Aggregate Ltd., will make every effort to minimize the impact of construction activities on the community.

What You Can Do to Prepare for Construction:

We understand that the construction project may cause some temporary disruptions. To help you prepare and minimize any inconvenience, here are some suggestions:

1. **Stay Informed:** Stay updated on the project progress, schedule, and any potential changes or updates by visiting the website www.floodreadiness.drumheller.ca or contacting the provided project contacts. Regular communication will ensure you are aware of any specific impacts or requirements during the construction period.
2. **Plan for Temporary Disruptions:** Be prepared for temporary disruptions such as increased noise levels, dust, and truck traffic. If you have any sensitive activities or events planned during the construction period, consider adjusting your schedules or notifying the project contacts for assistance in minimizing any disturbances.
3. **Secure Loose Items:** If you live near the construction area, ensure that any loose items on your property, such as fragile decorations, wall hangings, dishes and pictures are securely stored or relocated to avoid any potential damage.



CONSTRUCTION NOTICE

4. Follow Safety Instructions: Pay attention to any signage, temporary road closures, or traffic control measures implemented during the construction. Follow the instructions provided for your safety and the safety of the construction workers and stay well back of construction areas.
5. Protect Sensitive Areas: If you have sensitive areas on your property, such as gardens or landscaping, consider taking precautions to protect them during the construction period. You may want to install temporary barriers or coverings to prevent any potential damage.
6. Communicate Concerns: If you have any specific concerns or issues related to the construction, do not hesitate to reach out to the project contacts or the contractor. The safest way to make contact is by phone or email, approaching staff on site can be dangerous. They will be available to address your concerns and provide assistance whenever possible.

Contact Information:

FOR IMMEDIATE CONCERNS REGARDING CONSTRUCTION:

Brooks Asphalt and Aggregate Ltd
(P) 403-633 7893 (E) projectinfo@brooksasphalt.com

FOR CONCERNS REGARDING TECHNICAL, DESIGN OR CONSTRUCTION QUALITY:

WSP
Scott Wagner – 403-837-7751
Keith Poole – 403-820-5233

FOR INQUIRIES REGARDING THE DRUMHELLER FLOOD MITIGATION PROJECT:

Drumheller Flood Mitigation and Resiliency Office
(P) 403-823-4878 (E) floodreadiness@drumheller.ca

TOWN OF DRUMHELLER AFTER HOURS EMERGENCY:

403-823-2512

To Learn More:

For additional information about the Flood Office and the Flood Mitigation program, please visit our website at www.floodreadiness.drumheller.ca or email us at floodreadiness@drumheller.ca.

Thank you for your cooperation and understanding as we work towards building a safer and more resilient community.



CONSTRUCTION NOTICE

Homeowner Pre-Construction Check List:

Vibrations and noise are to be expected during construction. We are monitoring during construction to keep vibrations within the levels below those that cause structural damage, however it is likely that you will still feel vibrations and experience shaking in your home during construction. This is normal.

PROTECT YOUR VALUABLES

- Remove pictures from walls and place in a secure location
- Pack away valuable decorations
- Secure dishes and glasses
- Remove items from wall shelves which could potentially fall

What is normal?

It is normal to feel vibrations in your body, to see furniture moving and hear objects rattling. This is why it is important to secure items which could fall.

When should I be concerned?

If you notice cosmetic changes in your home like new cracks in your walls, nail pops or damage to seals, please reach out to the Flood Office to schedule a follow up inspection.

