
Monthly E-Newsletter

DRUMHELLER
FLOOD OFFICE

◆
May 2025

Construction Updates

Construction is moving ahead on the Nacmine and Rosedale berms as part of Drumheller's flood protection efforts. Crews are currently removing topsoil, preparing the ground, and hauling in materials to build the base of the berms. Thank you for your patience as we continue this important work to help protect our community from future flooding.



Ongoing Vibration Monitoring During Construction

As construction activities continue in Drumheller, so does our commitment to safety—especially when it comes to protecting nearby homes and structures. As part of our vibration monitoring program, regular assessments are being carried out by qualified professionals to ensure that vibration levels from heavy equipment and earthwork remain within safe limits.

Earlier this season, we invited landowners near construction zones and haul routes to schedule Pre-Construction Home Inspections. These inspections help document the current condition of homes and provide an important reference point, should any concerns arise during construction. Thank you to all residents who have already taken part—your cooperation is helping us maintain transparency and accountability throughout this process.

Vibration monitoring will continue for the entire duration of construction, with a focus on minimizing disruption and keeping our community safe.

If you have any questions or would like to learn more about how our vibration monitoring program works, visit floodreadiness.drumheller.ca or check out our short explainer video on YouTube: Watch Now <https://www.youtube.com/watch?v=PDoDGvgM-jY>

Stay Safe: River Access Through Construction Zones

We all know how important the river is to life in Drumheller—whether it's for recreation, relaxation, or simply part of your daily routine. But as we continue work on key infrastructure projects along the river, we need your help to keep everyone safe.

If you're near an active construction zone, river access through works areas is strictly off-limits. Even during evenings or weekends when things might look quiet, construction sites remain hazardous.

Barricades, fencing, and signage are not suggestions—they're essential safety measures in place to protect you and those around you. Please do your part by respecting all posted warnings and avoiding these areas until it's safe to return.

Let's keep our community safe while these important improvements take shape. Thank you for your cooperation!

No Trespassing: Construction Fences Are There for Your Safety

As construction continues throughout Drumheller on critical infrastructure and flood mitigation projects, safety remains our top priority—for workers, residents, and visitors alike.

Please be reminded that fenced-off construction zones are strictly off-limits. These areas are active work sites, and even when no workers are visible, there are serious safety risks such as unstable ground, heavy equipment, and exposed materials.

Why it matters:

- Fences and signage are there to protect you.
- Trespassing can delay work, damage equipment or plantings, and put lives at risk.
- Entering a construction zone without authorization is also a legal offense.

We ask for your continued cooperation in respecting all posted signs, barriers, and access restrictions. By staying clear of fenced areas, you're helping to ensure that projects stay on track—and that everyone stays safe.

Let's work together to build a safer, stronger Drumheller.



Trail Closures During Construction Season – Nacmine

We want to share a quick update on the ongoing construction in Nacmine, especially around the trail where it meets Hunter Drive.

Right now, there are no detours in place at the Hunter Drive trail crossing. However, later this summer, the trail will need to be temporarily closed during berm construction in that area. We'll share the closure dates as soon as they are confirmed.

The east entrance to Hunter Drive is currently closed to traffic, but it is being used by the contractor to access their work site on the river side. Trail users will need to cross paths with construction vehicles, such as dump trucks, at this location. Please refer to picture below for a better understanding of the route.

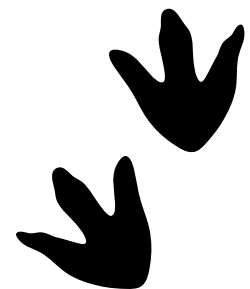
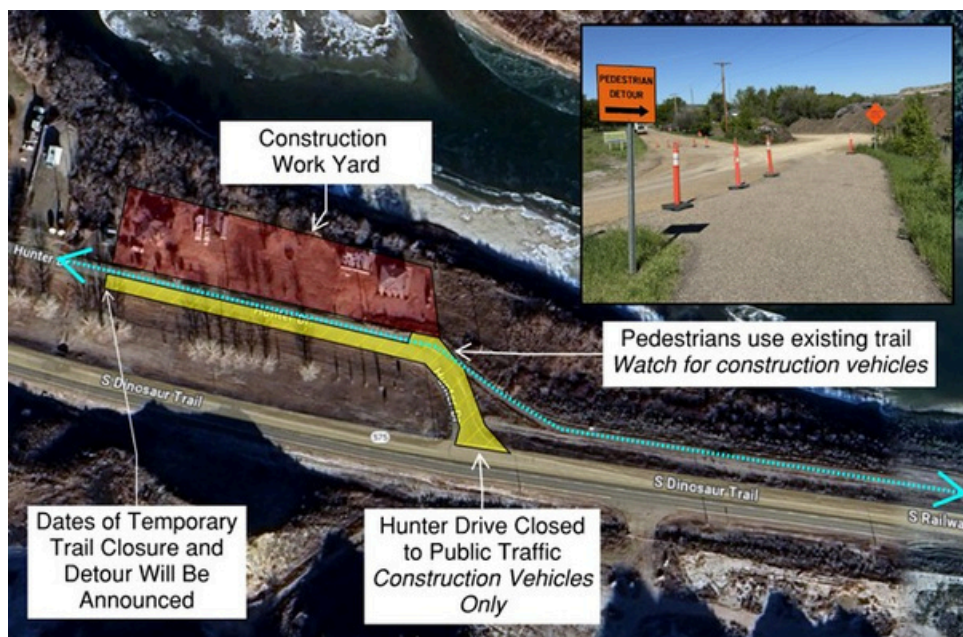
While there are no other specific trail or traffic detours, please note that construction vehicles will be travelling near 1st Street and 7th Street to access work yards. We ask everyone to stay alert and use extra caution when moving through these areas.

We understand that the construction activity and noise can be disruptive, and we truly appreciate your patience as we move forward with this important flood protection project. Stay safe and thank you for your cooperation!

From Flood Protection to Art: Trees Given New Life at Chainsaw Wizards

As part of Drumheller's ongoing flood mitigation efforts, some trees needed to be removed to make way for berm construction. But these trees aren't just gone—they've been given new life through art.

We're proud to share that the wood from some of these trees has been repurposed into stunning sculptures for the Chainsaw Wizards International Sculpting Event. This unique celebration brings together world-class talent and community spirit to honour the Valley's natural history in a meaningful and lasting way.

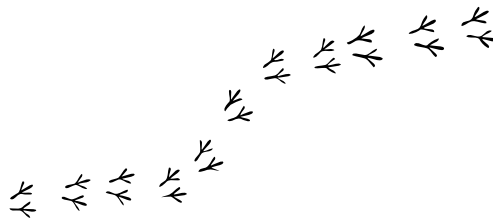
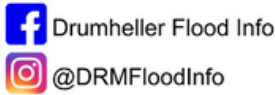


Ongoing Consultations with Indigenous Communities: Building Strong Partnerships

The Flood Office is excited to be engaging in meaningful consultations with Indigenous partners on the upcoming Nacmine and Rosedale berm construction as well as Indigenous planting initiatives in the Lehigh area. These discussions are a vital step in ensuring that we move forward in a way that respects and honors the heritage and input of Indigenous communities. We look forward to sharing more updates as these partnerships continue to grow and strengthen our projects.

Stay in the Loop!

Follow us on social media for real-time updates on the construction schedule and progress. Together, we're building a safer future!



Thank you for reading!

**DRUMHELLER FLOOD
RESILIENCY PROGRAM**



floodreadiness@drumheller.ca

floodreadiness.drumheller.ca

224 Centre Street
Drumheller, AB T0J 0Y4